

# *Escort MK 4*

Diese Informationen wurden ihnen bereitgestellt von  
<http://www.Escort-Mk4.de>.

Sollten sie die Informationen von einer anderen Quelle  
heruntergeladen haben bitte ich sie, mich zu informieren.  
Vielen Dank im vorraus. [Webmaster@Escort-MK4.de](mailto:Webmaster@Escort-MK4.de)

This Informations are hosted by <http://www.Escort-Mk4.de>.  
If you downloaded it from another Server please inform me.  
Many thanks. [Webmaster@Escort-MK4.de](mailto:Webmaster@Escort-MK4.de)



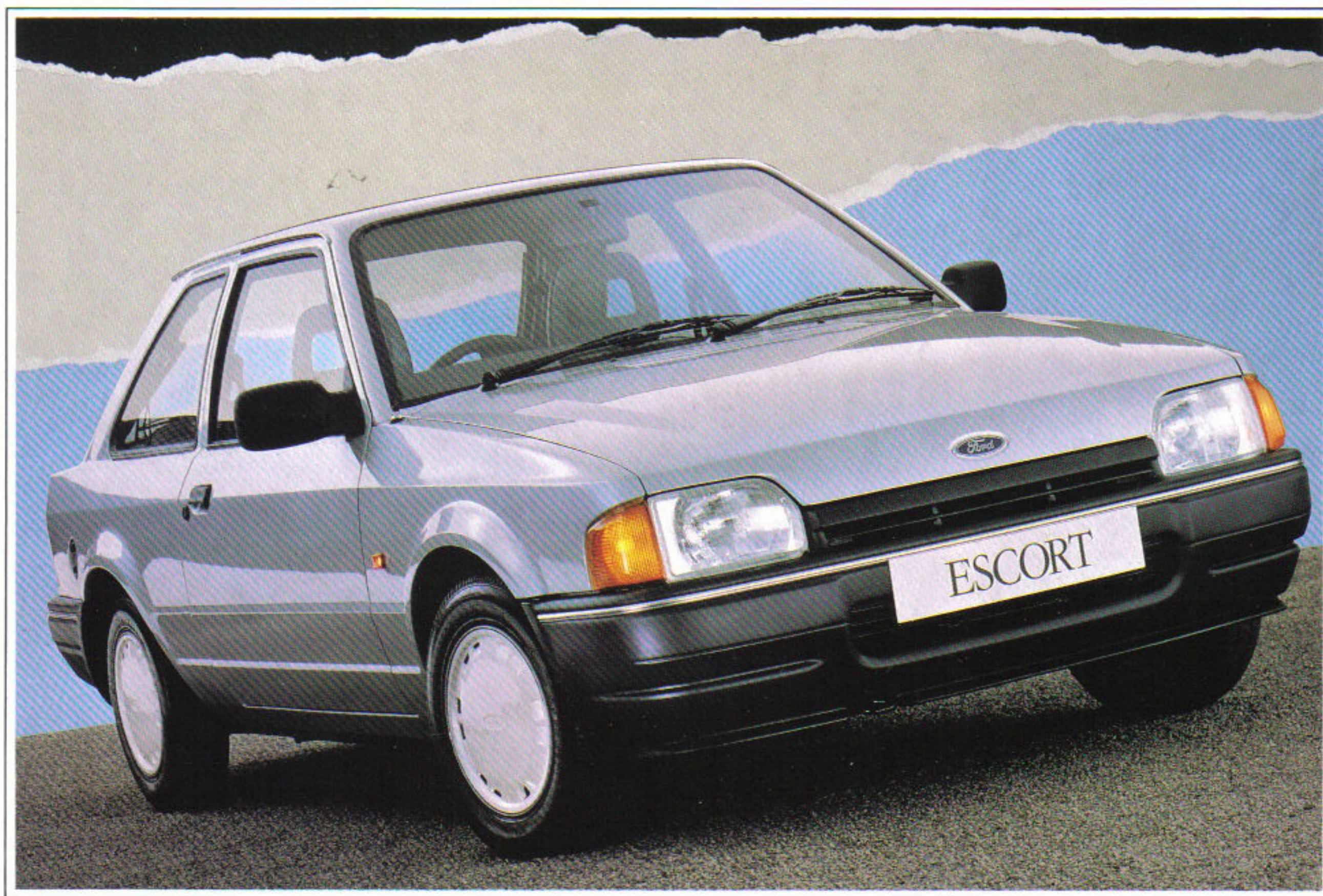


THE SPECIAL EDITION

# ESCORT

---

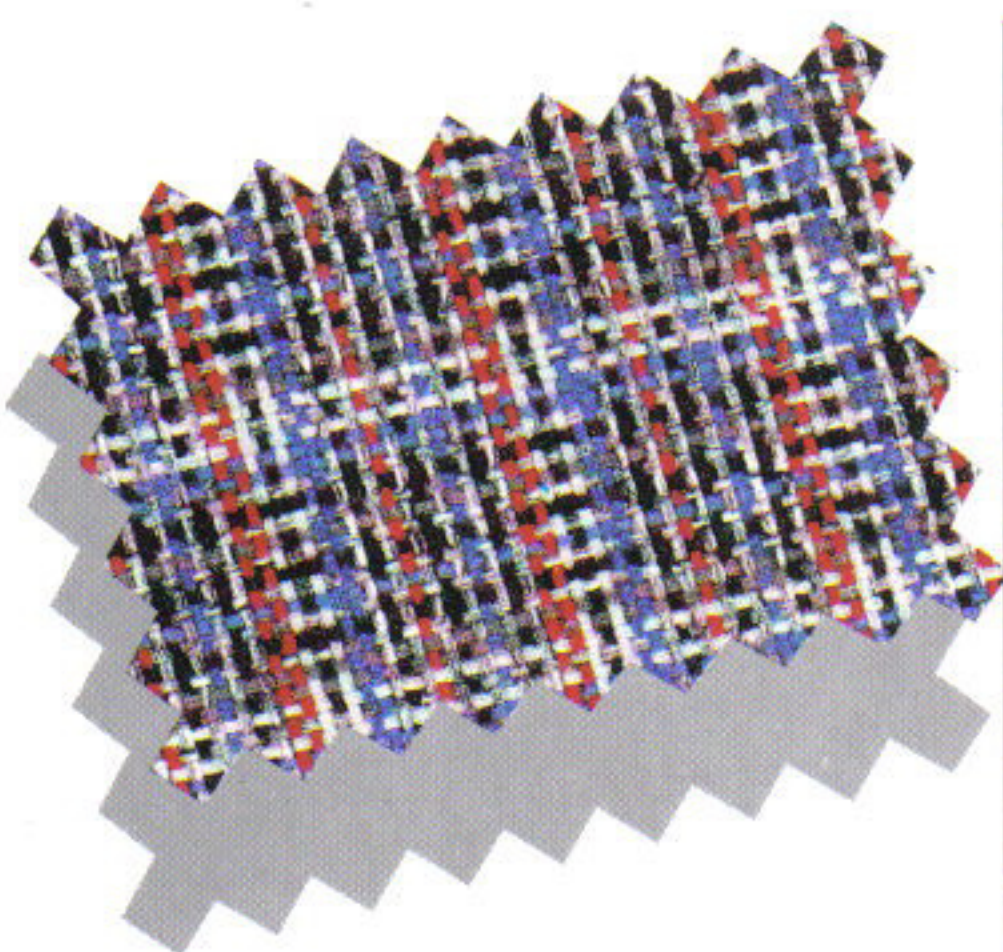
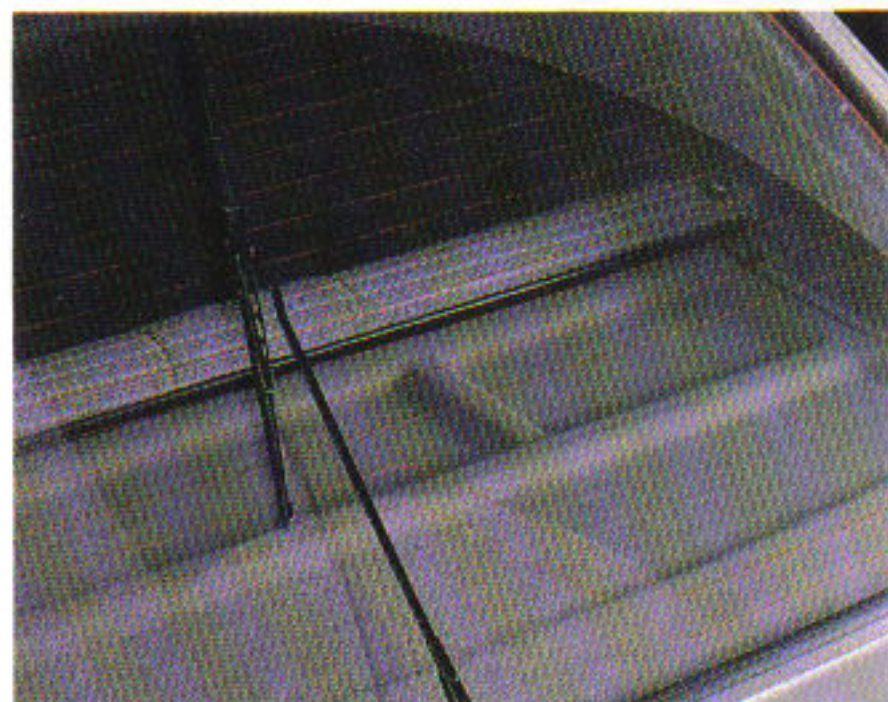
BONUS 90





---

THE SPECIAL EDITION ESCORT BONUS





---

*The new Escort Bonus 90 — ideal for business  
and pleasure — makes Britain's best-selling car  
even more appealing and affordable*

---



**N**o wonder the Escort is such a favourite, year after year. It's stylish, versatile, great to drive . . . and now even more appealing with the latest version of the 'Bonus' Special Edition. The Bonus now comes in a choice of eight attractive body colours, and is available with either a 1.1 or 1.3 High Compression Swirl (HCS) engine.

Standard features include:

- Either a 1.1 or 1.3-litre HCS petrol engine
- Choice of Black, and seven metallic body colours.
- Special 'Bonus 90' decal
- Full wheel covers in tri-coat white
- Stylish seat fabric — Chequers
- Electronic AM/FM mono radio — Model 2001 with anti-theft coding, and two speakers
- Tailgate wash/wipe
- Ample storage space includes a glovebox, door stowage bins and a useful 'trinket' tray with integral coin slots
- Clear and conveniently arranged instruments and controls include a central speedometer, illuminated micro switches and a quartz analogue clock.
- Tough, high security locks for doors, steering, tailgate and fuel filler cap.
- Handy, easy to operate remote control door mirrors
- An optional feature, available at extra cost is Ford's award winning mechanically controlled anti-lock braking system



# THE SPECIAL EDITION ESCORT BONUS



## MEMBERSHIP

All Ford cars, vans and pick-ups benefit from Ford's new Customer Care Package. This includes twelve months special RAC membership, and glass etching with insurance that provides a replacement vehicle for up to seven days free if yours is stolen. There's also an improved optional Extra Cover plan.

## TECHNICAL FEATURES

■ **1.1 HCS ENGINE WITH FOUR SPEED GEARBOX** <sup>E</sup>

■ **1.3 HCS ENGINE WITH FOUR SPEED GEARBOX** <sup>E</sup>

■ **BRAKES:**

Diagonally-split servo-assisted system  
Front discs and self-adjusting rear drums

■ **EXHAUST SYSTEM, LONG LIFE**

■ **FUEL TANK — 47 LITRES**

■ **RADIATOR FAN THERMOSTATICALLY CONTROLLED**

■ **SUSPENSION:**

Fully independent  
Front MacPherson struts with coil springs and forward mounted stabiliser bar  
Rear pressed steel swinging arms and strut-type shock absorbers, longitudinal location by tie-bars, non-concentric coil springs.

## STANDARD EXTERIOR FEATURES

■ **GREY BUMPERS WITH BRIGHT INSERT**

■ **'BONUS 90' DECAL**

■ **FUEL TANK CAP WITH HIGH-SECURITY LOCK, LOCKING BY IGNITION KEY**

■ **HEATED REAR WINDOW**

■ **HORN, SINGLE TONE**

■ **LIGHTS:**

Halogen headlights  
Hazard warning flashers  
Reversing lights  
Rear fog lights  
Side repeat flashers

■ **LOCKS:**

Anti-burst door locks  
High security  
Interior door lock release in interior door latch handle  
Bootlid push lock

■ **MIRRORS:**

Remote control  
Black housings

■ **TOW HOOKS, FRONT AND REAR**

■ **TYRES, 155 SRx13**

■ **WHEELS, 5x13 STEEL**

■ **FULL WHEEL COVERS IN TRI-COAT WHITE**

■ **WIPERS**

Two-speed intermittent  
Electric wash  
Tailgate wash/wipe

## STANDARD INTERIOR FEATURES

■ **ASHTRAYS:**

One mounted in instrument panel centre stack  
One in rear side panel

■ **GREY FLEECE CARPET**

■ **CLOCK, QUARTZ ANALOGUE**

■ **TRINKET TRAY WITH INTEGRAL COIN SLOTS**

■ **CONTROLS:**

Three steering column stalks controlling lights functions, front wash/wipe functions and indicators

■ **DOOR TRIM:**

Moulded panel including soft-feel armrests and stowage bins, door pull, grabhandles and cloth insert

■ **GRABHANDLE ON FRONT PASSENGER'S SIDE**

■ **HEADLINING:**

Dawn Grey

■ **HEATER/VENTILATION:**

Heater controls with illuminated bezel  
Three speed illuminated heater blower switch  
Four face-level vents, air temperature, direction and flow controlled  
Dedicated side window demist

■ **IN-CAR ENTERTAINMENT**

Electronic AM/FM Mono Radio — Model 2001 with anti-theft coding  
Two speakers

■ **INSTRUMENTS:**

Speedometer, odometer, fuel gauge, water temperature gauge, trip recorder  
Warning lights for oil pressure, direction indicators, high beam, ignition/alternator, brake failure/handbrake, 'lights-on'

■ **INSTRUMENT PANEL:**

Black instrument binnacle  
Driver's side lower stowage  
Passenger's side upper stowage  
Glove box with lid

■ **LIGHTS:**

Front courtesy light, header mounted operated by switches on front doors

■ **LUGGAGE COMPARTMENT:**

Carpet on floor  
Tilting/removable rear package tray

■ **MIRRORS:**

Dipping interior rear view

■ **SEATS:**

Fully reclining front  
'A' frame front head restraint  
Rear folding seat back and cushion

■ **SEAT BELTS:**

Front inertia reel  
Rear outboard inertia reel and centre static

■ **TWO-SPOKE SOFT-FEEL STEERING WHEEL WITH CENTRE HORN PUSH**

■ **SUNVISORS, TWO SWIVELLING**

■ **ILLUMINATED INSTRUMENT PANEL MICRO-SWITCHES**

■ **TAILGATE BOOT GAS STRUTS**

## FACTORY FITTED OPTIONAL FEATURES AT EXTRA COST

■ **ANTI-LOCK BRAKES**



Extra Cover. The optional warranty plan which includes RAC membership.

See your Ford Dealer for details.

## CAR BODY COLOURS / SEAT TRIM

**SOLID COLOURS** **CHEQUERS**

BLACK SHADOW

## METALLIC COLOURS

STRATO SILVER SHADOW

MERCURY GREY SHADOW

TASMAN BLUE SHADOW

AQUA JADE SHADOW

MAGENTA SHADOW

OLYMPIC GOLD SHADOW

MATISSE BLUE SHADOW

All colours at no extra cost.



<sup>E</sup> Able to run on either leaded or unleaded petrol without adjustment.

**Taylors of Woodford Ltd.**  
**Woodford, Berkeley, Glos**  
**Falfield 260133**

## ILLUSTRATIONS, DESCRIPTIONS AND SPECIFICATIONS

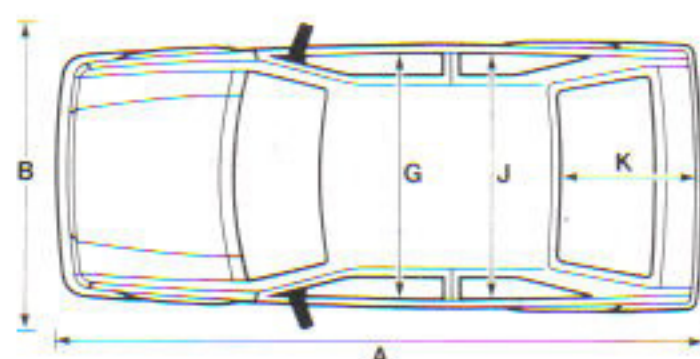
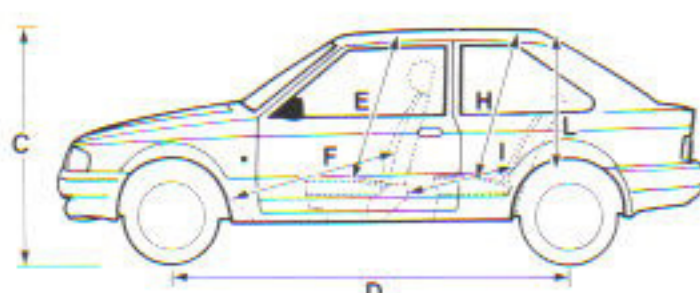
Ford policy is one of continuous product development. The right is reserved to change specifications, colours and prices of the models and items illustrated and described in this publication at any time. For the latest details always consult your Ford Dealer.

Published by Marketing Programmes,  
Ford Motor Company Limited,  
Brentwood, Essex, England.  
FA 944  
October 1989

Designed and produced by  
Allan Burrows Limited  
Ingatstone, Essex.

Printed in England by  
Jarrod & Son Limited  
Norwich.

## DIMENSIONS



Dimensions may vary dependent upon model, level of equipment fitted and manufacturing tolerances.

## EXTERIOR Inches (mm)

EXTERIOR Inches (mm)	ESCORT
A OVERALL LENGTH	159.4 (4049)
B OVERALL WIDTH	72.2 (1834)
C UNLADEN HEIGHT	54.1 (1374)
D WHEELBASE	94.5 (2400)

## INTERIOR Inches (mm)

INTERIOR Inches (mm)	ESCORT
E FRONT EFFECTIVE HEADROOM	38.0 (966)
F MAX EFFECTIVE LEGROOM	40.5 (1029)
G SHOULDER ROOM	51.4 (1305)
H REAR EFFECTIVE HEADROOM	37.1 (942)
I MAX EFFECTIVE LEG ROOM	34.7 (881)
J SHOULDER ROOM	51.6 (1311)

## STOWABLE LUGGAGE cu.ft (cu.m)†

STOWABLE LUGGAGE cu.ft (cu.m)†	ESCORT
K 5 SEAT MODE	12.7 (0.360)
L 2 SEAT MODE (laden to roof)	37.1 (1.051)

† Measured using the VDA method