

Escort MK 4

Diese Informationen wurden Ihnen bereitgestellt von
<http://www.Escort-Mk4.de>.

Sollten Sie die Informationen von einer anderen Quelle
heruntergeladen haben, bitte ich Sie, mich zu informieren.
Vielen Dank im Voraus. Webmaster@Escort-MK4.de

This information is hosted by <http://www.Escort-Mk4.de>.
If you downloaded it from another server, please inform me.
Many thanks. Webmaster@Escort-MK4.de

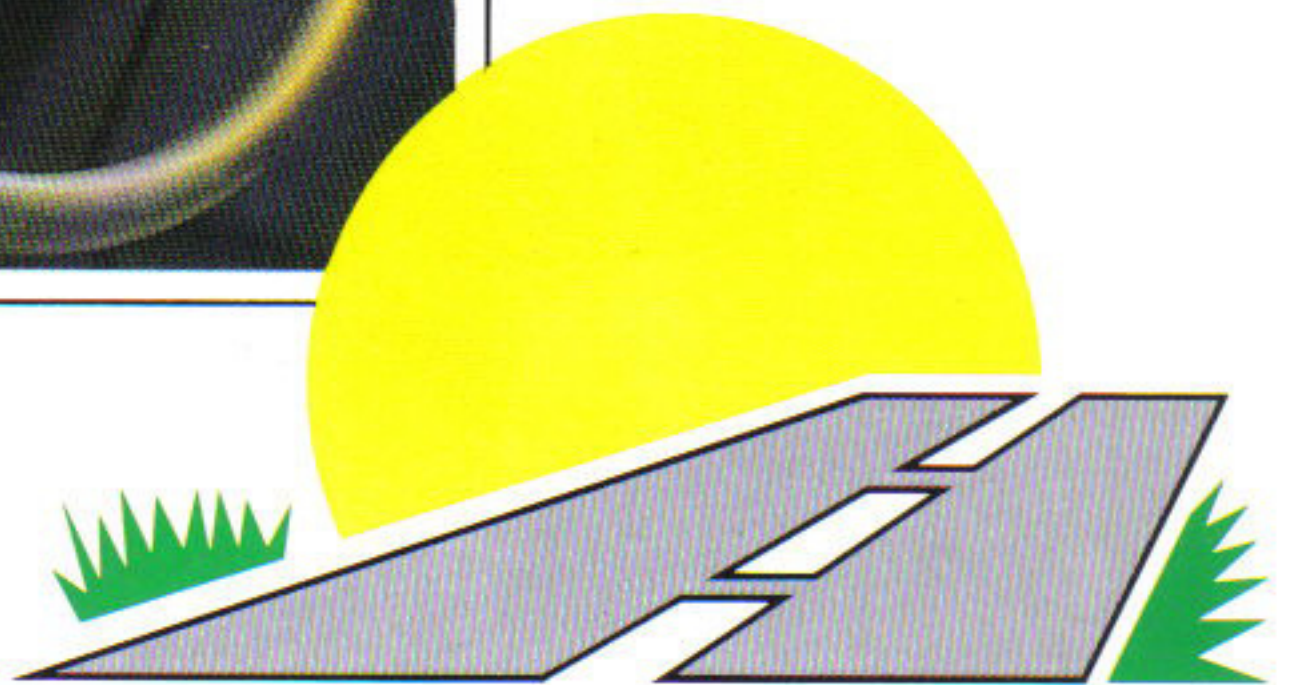


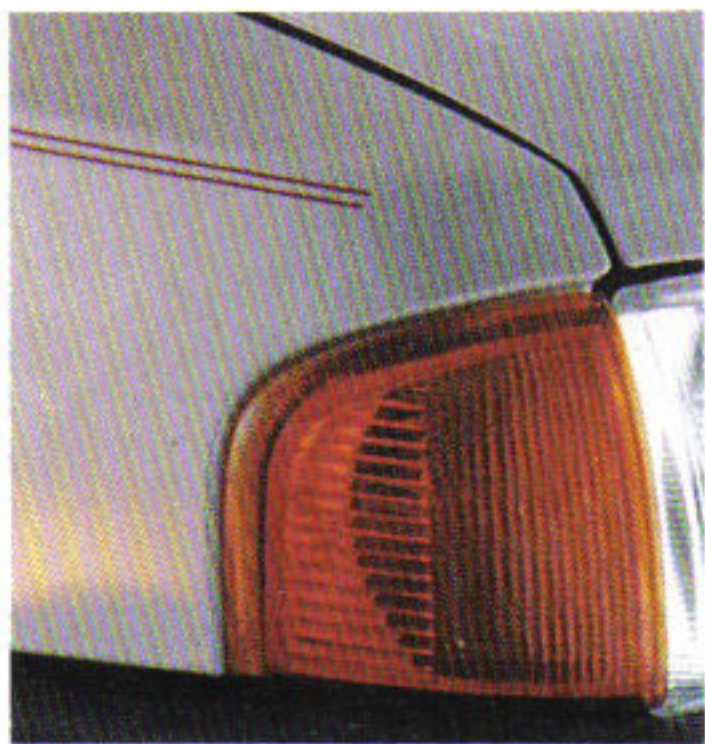
ESCORT GL

Plus



Get on the bright side of the road





Take a good look at what the new Ford Escort GL Plus has to offer. This special edition version of Britain's most popular car can be specified with metallic or black paint at no extra cost and comes complete with electrically operated door mirrors and electrically operated front windows. Plus all the value-for-money Escort GL features.



- Choice of 1.4-litre and 1.6-litre 'lean burn' petrol engines. All engines have a five-speed gearbox.
- Tinted glass.
- Electrically operated front windows.
- Electrically operated door mirrors.
- Centre console with integral coin slots and cassette stowage.
- Tachometer and quartz digital clock.
- Tilt-or-slide glass sunroof with louvred blind.

- Central locking.
- Illuminated glovebox with lid.
- Full choice of GL body colours including black or metallic paint at no extra cost.
- Self-Seek FM Cassette with four speakers, 'joystick' balance control, and radio aerial incorporated in rear window's heating element.



ESCORT GL *Plus*





ESCORT GL PLUS SPECIAL FEATURES

■ Electrically operated front windows.

■ Electrically operated door mirrors.

■ Full choice of bodycolours including black and metallic paint at no extra cost.

ENGINEERING

■ Body, five-door hatchback.

■ Engines: 1.4; 1.6. All engines have a five-speed gearbox.

■ Manual choke with electronic breakerless ignition on 1.4. Automatic choke with breakerless ignition on 1.6.

EXTERIOR

■ Grey bodyside moulding with bright insert.

■ Body coloured bumper with bright insert.

■ Coach lines.

■ Single tone horn.

■ Central door locking including door key.

■ Tinted glass.

■ Tyres, 155 SR 13.

■ Wheels, 5x13 steel.

■ Full wheel covers.

■ Tailgate wash/wipe.

INTERIOR

■ Colour-keyed cut-pile carpet.

■ Cigar lighter, illuminated front.

■ Clock, quartz digital solid state.

■ Centre console with integral coin slots and cassette stowage.

■ Perforated parchment headlining.

■ In-car entertainment: Self-Seek FM Cassette ESRT 32PS; four speakers; aerial incorporated in rear windscreen.

■ Tachometer.

■ Glovebox with lid and illumination.

■ Load compartment/book light.

■ Carpeted tilting/removable rear package tray.

■ Passenger sunvisor vanity mirror.

■ 60:40 split rear seat back.

■ Fully adjustable front head restraints.

■ Two-spoke soft feel steering wheel with centre horn push.

■ Sunroof, tilting/sliding glass with louvred blind.

■ Wind down rear windows.

COLOUR AND MAIN PATTERNED TRIM

SOLID

COLOUR	'Strobe'
Diamond White	Bluestone or Shadow
Ivory	Taupe
Burgundy Red	Taupe or Shadow
Galaxy Blue	Bluestone or Shadow
Maritime Blue	Bluestone or Shadow
Rosso Red	Taupe or Shadow
Black	Taupe or Shadow

METALLIC

COLOUR	'Strobe'
Strato Silver	Bluestone or Shadow
Silica Gold	Taupe
Chestnut	Taupe
Regency Red	Shadow
Crystal Blue	Bluestone or Shadow
Willow Green	Shadow
Mercury Grey	Bluestone or Shadow

OPTIONS Factory fitted at extra cost:

■ Anti-lock brakes, only with manual gearbox.

■ Gearbox, Automatic transmission with oil cooling on 1.6 engines.

■ Electronic Sound System ECU2 including power amplifier.

■ Graphic Equaliser, only with ECU2 option.

■ Heated windscreen.

EXTRA COVER PLANS

Extra Cover Plans available, see your Ford Dealer for details.

Standard exterior features on all Escort models.

■ Bumpers, impact resistant polycarbonate.

■ Fuel tank cap with high security lock, locking by ignition key.

■ Heated rear window.

■ Lights: Halogen headlights. Hazard warning flashers. Reversing lights. Rear fog lights. Side repeat flashers.

■ Locks: Anti-burst door locks. Child proof rear door locks. High security. Integral door lock release in interior door latch handle. Tailgate/bootlid push lock.

■ Tow hooks, front and rear.

■ Wipers: Two-speed intermittent.

Electric wash.

Standard interior features on all Escort models

■ Ashtrays: One mounted in instrument panel centre stack. One in rear side panel.

■ Controls: Two steering column stalks controlling lights functions, front wash/wipe functions and indicators.

■ Door trim: Moulded panel including soft feel armrests and stowage bins, door pull, grab handles and cloth insert.

■ Grab handle on front passenger side.

■ Heater/ventilation:

Heater controls with illuminated bezel. Three-speed illuminated heater blower switch. Four face level vents, air temperature, direction and flow controlled. Dedicated side window demist.

■ Instruments: Speedometer, odometer, fuel gauge, water temperature gauge, trip recorder. Warning lights for oil pressure, direction indicator, high beam, ignition/alternator, brake failure/handbrake, 'lights-on'.

■ Instrument panel:

Black instrument binnacle.

Driver's side lower stowage.

Passenger's side upper stowage.

Glovebox with lid.

■ Lights: Front courtesy light, header mounted.

operated by switches on front doors.

■ Luggage compartment: Carpet on floor.

■ Mirrors: Dipping interior rear view, black.

■ Seats: Fully reclining front. Rear folding seat back and cushion.

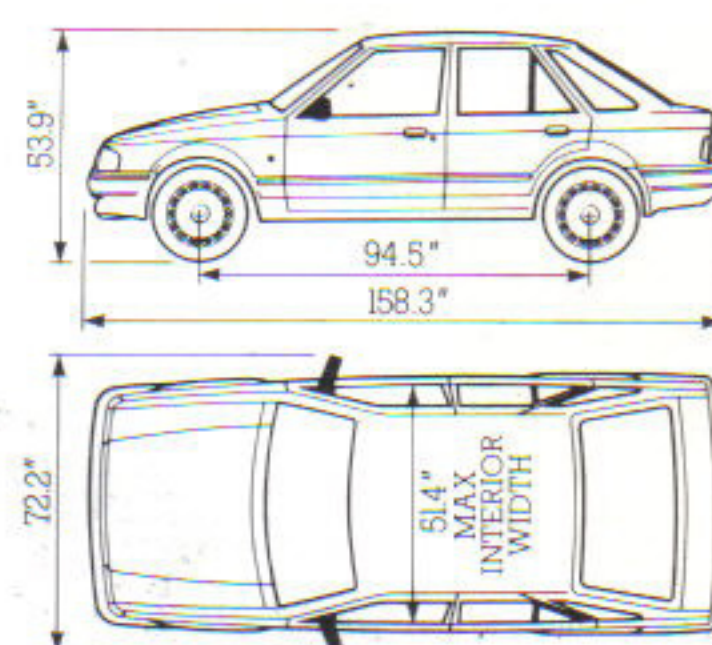
■ Seat belts: Front inertia reel.

Rear outboard inertia reel and centre static.

■ Sunvisors, two swivelling.

■ Switches: Illuminated instrument panel micro switches.

■ Tailgate/boot gas struts.



ILLUSTRATIONS, DESCRIPTIONS AND SPECIFICATIONS.

Ford policy is one of continuous product development. The right is reserved to change specifications, colours and prices of the models and items illustrated and described in this publication at any time. Where possible, any such changes which may be introduced after publication of this booklet but before it is supplied will be incorporated herein or announced by means of a notice prominently displayed in Ford Dealerships at the point of supply. For the latest details always consult your Ford Dealer.

Published by
Car and Truck Marketing
Programmes,
Ford Motor Company Limited,
Brentwood, England.
FA 833
July 1988

Designed and produced by
Allan Burrows Limited
Ingatestone, Essex.

Printed in England by
Jarrold & Sons Limited
Norwich.

