

# *Escort MK 4*

Diese Informationen wurden ihnen bereitgestellt von  
<http://www.Escort-Mk4.de>.

Sollten sie die Informationen von einer anderen Quelle  
heruntergeladen haben bitte ich sie, mich zu informieren.

Vielen Dank im vorraus. [Webmaster@Escort-MK4.de](mailto:Webmaster@Escort-MK4.de)

This Informations are hosted by <http://www.Escort-Mk4.de>.  
If you downloaded it from another Server please inform me.  
Many thanks. [Webmaster@Escort-MK4.de](mailto:Webmaster@Escort-MK4.de)



# ESCORT

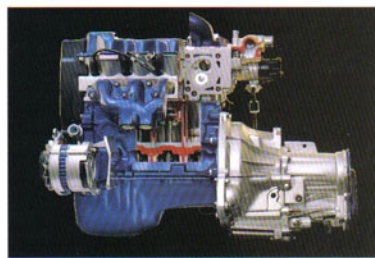
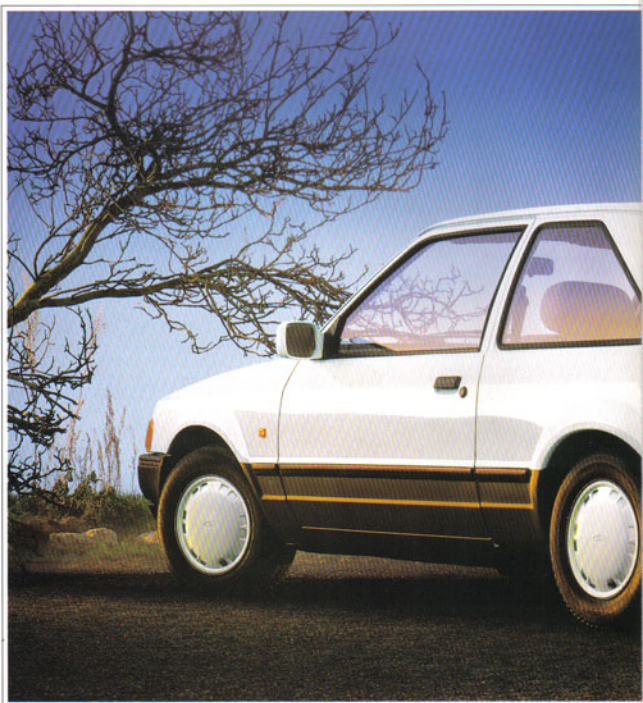
---

## SPORT



---

ESCORT SPORT





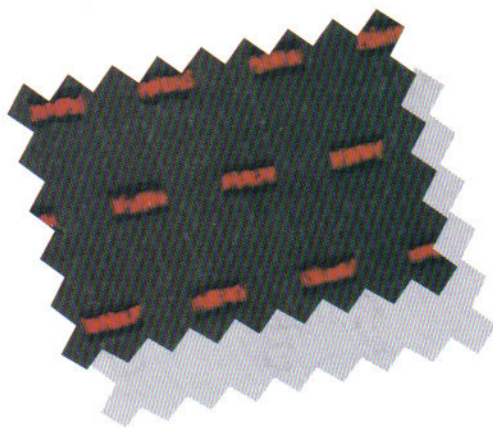
*A highly desirable Escort with power and features to ensure it lives up to its name*



**T**here's a sporty feel throughout the new three-door Escort Sport, with a host of sports-related features and the zest of a 1.6 CVH engine.

Standard features include:

- Three-door bodystyle.
  - 1.6-litre CVH petrol engine with five-speed gearbox.
  - Protective bodyside mouldings and polycarbonate bumpers with red inserts. Grey paint treatment below bodyside moulding.
  - Black tailgate spoiler.
  - Special tricoat white wheel covers.
  - Front sport seats trimmed in Daytona fabric.
  - Sports soft-feel two spoke steering wheel with centre horn push.
  - Central locking.
  - Tinted glass.
  - Tilt-or-slide glass sunroof with louvred blind.
  - Remote control door mirrors with body colour housings.
  - 60:40 split-fold rear seat back.
  - Clear, crisp instruments include tachometer and header mounted quartz digital clock.
  - Electronic Self-Seek AM/FM Stereo Radio/Cassette — 2005 with anti-theft coding and aerial incorporated in tailgate window heating element.
- ☐ Key optional features, available at extra cost, include a mechanically controlled anti-lock braking system.





## TECHNICAL FEATURES

### THREE-DOOR ESCORT

### 1.6 OHC (CVH) ENGINE WITH FIVE-SPEED GEARBOX [R]

### BRAKES:

Diagonally-split dual-line servo-assisted system  
Front discs and self-adjusting rear drums

### EXHAUST SYSTEM, LONG LIFE

### FUEL TANK — 47 LITRES

### RADIATOR FAN THERMOSTATICALLY CONTROLLED

### SUSPENSION:

Fully independent  
Front MacPherson struts with coil springs and forward mounted stabiliser bar  
Rear pressed steel swinging arms and strut-type shock absorbers, longitudinal location by tie-bars, non-concentric coil springs.

## STANDARD EXTERIOR FEATURES

### GREY BODYSIDE MOULDINGS WITH RED INSERT

### GREY POLYCARBONATE BUMPERS WITH RED INSERT

### GREY PAINT TREATMENT BELOW BODYSIDE MOULDING

### FUEL TANK CAP WITH HIGH-SECURITY LOCK, LOCKING BY IGNITION KEY

### HEATED REAR WINDOW

### HORN, SINGLE TONE

### LIGHTS:

Halogen headlights  
Hazard warning flashers  
Reversing lights  
Rear fog lights  
Side repeat flashers

### LOCKS:

Anti-burst door locks  
High security  
Interior door lock release in interior door latch handle  
Tailgate push lock  
Central door lock including torch key

### MIRRORS:

Remote control  
Body-colour housings

### BLACK TAILGATE SPOILER

### TINTED GLASS

### TOW HOOKS, FRONT AND REAR

### TYRES, 175/70×13

### WHEELS, 5×13 STEEL

### FULL WHEEL COVERS IN TRICOAT WHITE

### WIPERS:

Two-speed intermittent  
Electric wash  
Tailgate wash/wipe

## STANDARD INTERIOR FEATURES

### ASHTRAYS:

One mounted in instrument panel centre stack  
One in rear side panel

### COLOUR-KEYED NON-WOVEN VELOUR CARPET

### CIGAR LIGHTER, ILLUMINATED FRONT

### CLOCK, QUARTZ DIGITAL SOLID STATE

### TRINKET TRAY WITH INTEGRAL COIN SLOTS AND CASSETTE STORAGE

### CONTROLS:

Three steering column stalks controlling lights functions, front wash/wipe functions and indicators

### DOOR TRIM:

Moulded panel including soft-feel armrests and storage bins, door pull, grabhandles and cloth insert

### GRABHANDLE ON FRONT PASSENGER'S SIDE

### HEADLINING, DAWN GREY

### HEATER/VENTILATION:

Heater controls with illuminated bezel  
Three-speed illuminated heater blower switch  
Four face-level vents, air temperature, direction and flow controlled  
Dedicated side window demist

### IN-CAR ENTERTAINMENT:

Electronic Self-Seek AM/FM Stereo  
Radio/Cassette — Model 2005 with anti-theft coding  
Four speakers  
Aerial incorporated in rear windscreen

### INSTRUMENTS:

Speedometer, odometer, fuel gauge, water temperature gauge, trip recorder  
Warning lights for oil pressure, direction indicators, high beam, ignition/alternator, brake failure/handbrake, 'lights-on'  
Tachometer

### INSTRUMENT PANEL:

Black instrument binnacle  
Driver's side lower stowage  
Passenger's side upper stowage  
Glovebox with lid

### LIGHTS:

Front courtesy light, header mounted operated by switches on front doors

### LUGGAGE COMPARTMENT:

Carpet on floor  
Carpeted tilting/removable rear parcel tray

### MIRRORS:

Dipping interior rear view mirror  
Vanity mirror on passenger's sunvisor

### SEATS:

Front sports seats  
Fully reclining front  
Fully adjustable head restraints on front seats  
Rear folding seat back and cushion  
60:40 split rear seat back

### SEAT BELTS:

Front inertia reel  
Rear outboard inertia reel and centre static

### SPORTS TWO-SPOKE SOFT-FEEL STEERING WHEEL WITH CENTRE HORN PUSH

### SUNROOF, TILTING/SLIDING GLASS WITH LOUVRED BLIND

### SUNVISORS, TWO SWIVELLING

### ILLUMINATED INSTRUMENT PANEL MICRO-SWITCHES

### TAILGATE GAS STRUTS

## FACTORY FITTED OPTIONAL FEATURES AT EXTRA COST

### ANTI-LOCK BRAKES, ONLY WITH MANUAL GEARBOX

### PAINT:

Black  
Metallic

## EXTRA COVER PLANS

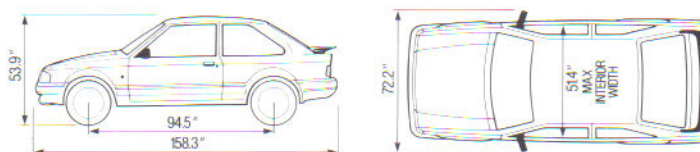
Extra Cover Plans available, see your Ford Dealer for details.

### CAR BODY COLOURS / MAIN SEAT FABRIC

| SOLID COLOURS                 | DAYTONA |
|-------------------------------|---------|
| DIAMOND WHITE                 | SHADOW  |
| RADIANT RED                   | SHADOW  |
| BLACK (EXTRA COST)            | SHADOW  |
| METALLIC COLOURS (EXTRA COST) |         |
| STRATO SILVER                 | SHADOW  |
| MERCURY GREY                  | SHADOW  |



[R] Requires ignition timing adjustment by Ford Dealer to run on unleaded petrol.



### ILLUSTRATIONS, DESCRIPTIONS AND SPECIFICATIONS

Ford policy is one of continuous product development. The right is reserved to change specifications, colours and prices of the models and items illustrated and described in this publication at any time. Where possible, any such changes which may be introduced after publication of this booklet but before it is supplied will be incorporated herein or announced by means of a notice prominently displayed in Ford Dealerships at the point of supply for the latest details always consult your Ford Dealer.

Your Ford Dealer

Published by  
Marketing Programmes,  
Ford Motor Company Limited,  
Brentwood, England  
July 1989  
FA 921

Designed and produced by  
Allan Burrows Limited  
Ingatestone, Essex.

Printed in England by  
Jarrod & Sons Limited  
Norwich.